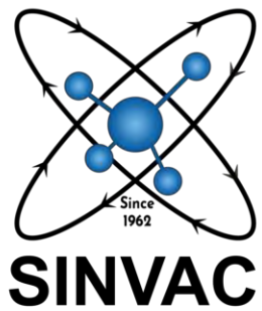


Manufacturer of

# SINVACLITE™

HDPE Structured Wall

**Sewer / Stormwater Pipe & Manholes**



**D2 & D3**

**Dolomite Land**

**SANS 1936-3 : 2012**

**Flexible Pipe**

**Adapts to soil movement**

**Approved**

Hot Gas Extrusion

**Welded Joints**

In accordance with

**SANS 10268-1**



**“Your Single Source HDPE Solution Company”**



Member of:

**SAPPMA**  
southern african plastic pipe manufacturers association



Manufactured in  
accordance with  
**SANS21138**



163 Lloyd Street, Pretoria Industrial, Pretoria West, 0117

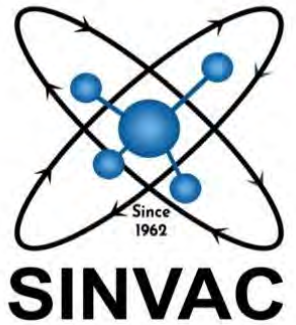
[www.sinvac.co.za](http://www.sinvac.co.za)

[info@sinvac.co.za](mailto:info@sinvac.co.za)

T : +27(0)12 - 386 6484

**B-BBEE level 2**

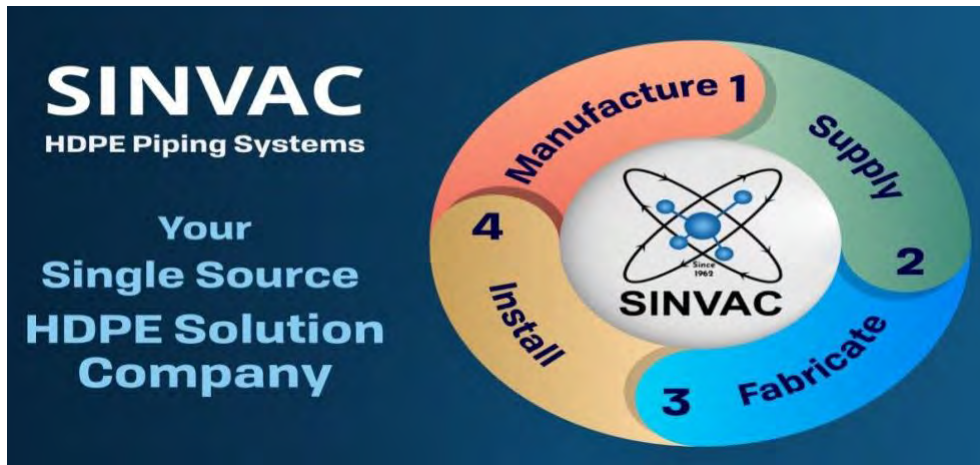
# SINVACLITE™ HDPE Structured Wall Pipe



## Content

- SINVAC Group Vision & Mission 3
- SINVAC Companies 4
- Introduction 5
- Dolomite Land in South Africa 6
- SINVACLITE™ Advantages 7
- SINVACLITE™ Manholes 8
- SINVACLITE™ Size Table 11
- Jointing Methods 12
- Technical Specification 16
- HDPE vs Concrete 17
- Flow Calculation 19
- Gallery 120
- Polymer Laboratory 21
- Accreditation 22
- Pressure Test 23
- Reference 24
- Pipelaying & Back Filling 25
- Handling, Loading & Transportation 28
- SINVAC Products & Services 29





## SINVAC GROUP VISION



To be the preferred one-stop supplier of HDPE pipes, fabricated plastic solutions, piping projects and related products in Africa.





# SINVAC GROUP MISSION



The SINVAC mission is to be the preferred supplier of HDPE piping systems and related products in Africa. This competitive position is derived from its customer centricity, ability to provide an all-inclusive solution from pipes to installed projects at a world class service level.

SINVAC is an OEM for most of its products and manufacture and supply its products in a structured way with innovative, enthusiastic team players.

## SINVAC COMPANIES

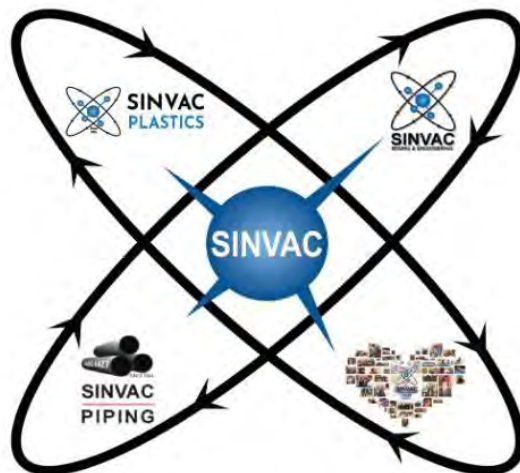


### SINVAC Plastics

SINVAC Plastics is the most experienced roto moulder in South Africa and was established in 1962. We supply a wide range of high quality plastic roto moulded items and accessories.

### SINVAC Mining & Engineering

SINVAC Mining & Engineering was established end 2007 to operate from the manufacturing platform created by SINVAC Piping, SINVAC Plastics and Johannesburg Foundry.



### SINVAC Piping

SINVAC Piping manufacturers SINVACLITE and SABS HDPE pressure pipe under SANS accreditation and supply brackets, stubs, bends, tee's, flanges and fittings to a wide variety of industries. SINVAC Development Trust

More than just the corporate social investment activities of the SINVAC Investments (Pty) Ltd group. Giving back and serving within the range of The SINVAC Group's product and service solutions.

# SINVACLITE™ HDPE Structured Wall

## Introduction



### Pipe

**SINVACLITE™** represents the latest advancements in material and manufacturing technology. Raw material properties and product technology have been combined to provide a light-weight engineered pipe for various gravity and non-pressure applications in the municipal, industrial, road construction, rehabilitation and marine pipeline applications.

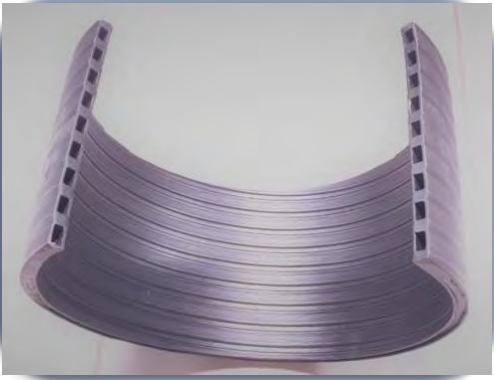
HDPE Structured Wall Pipe is now the front runner in replacing traditional pipe system materials like concrete, CMP (corrugated metal pipe) and PVC (polyvinylchloride).

**SINVACLITE™** is manufactured through a specially designed profile extrusion process where a square or rectangular profile is extruded and spirally wound onto a mandrel. The overlap on the edge of the extruded profile is fused homogeneously together whilst still in the hot plastic state to create a smooth internal surface.

This results in a light-weight HDPE Structured Wall Pipe which has all the advantages of a normal solid-wall HDPE pipe but with added benefits of being light-weight, easy to transport and install, which then makes it an obvious choice for gravity and non-pressure applications.

HDPE Structured Wall Pipe is normally defined by the inside diameter and the ring stiffness for the desired application. With pipe ID range from 300mm to 1200mm and ring stiffness of  $4\text{kN/m}^2$  or  $8\text{kN/m}^2$





## Structured Wall Profile

### Dolomite Land in South Africa

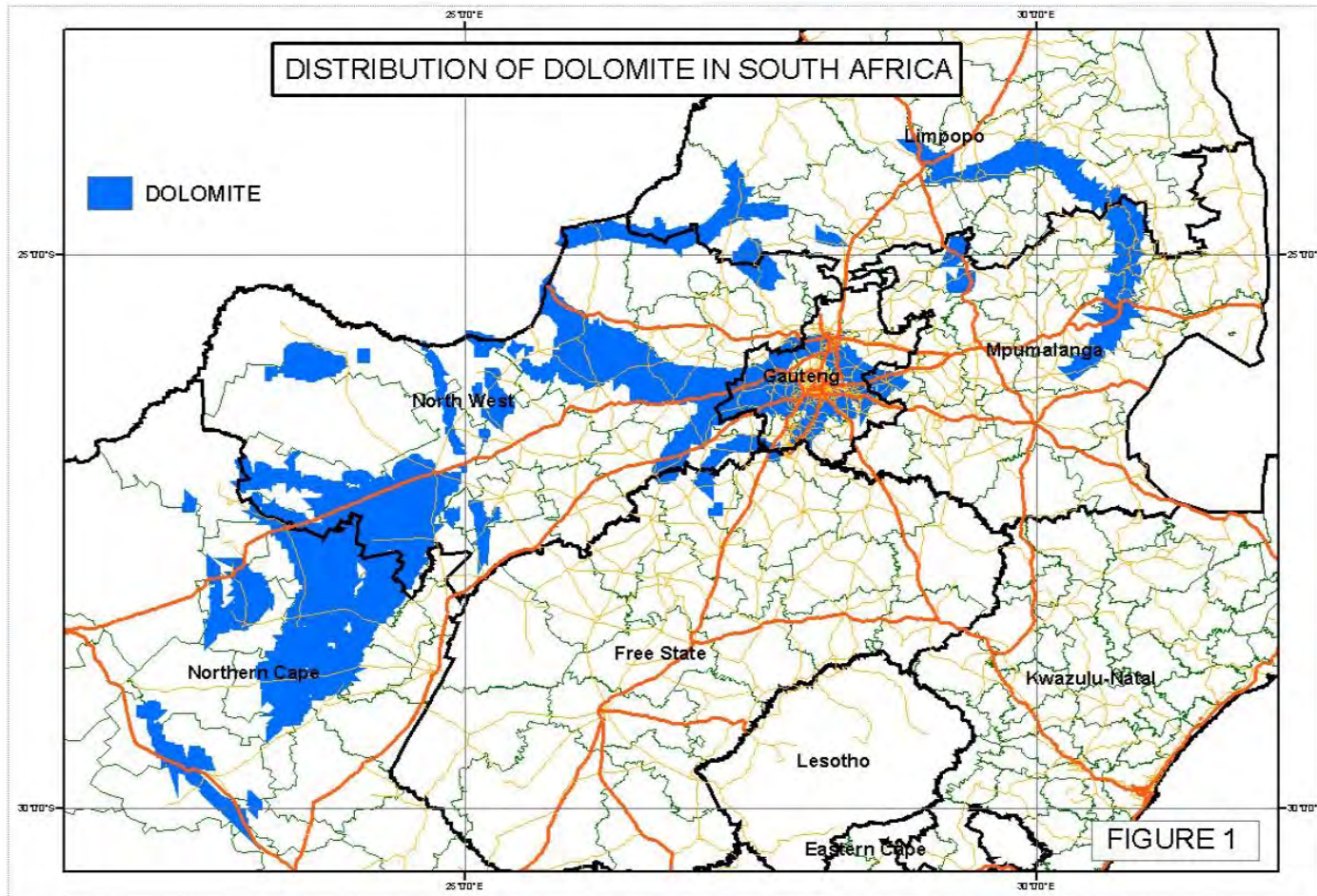


**Northern Cape, Limpopo, Mpumalanga, North West and approximately 25% of Gauteng** is underlain by Dolomite rock that become water soluble over time. HDPE Pipes, Fittings and Manholes are the recommended materials to be used in these areas.

SINVAC manufactures and installs SINVACLITE HDPE Structured Wall Pipe and Manholes for systems with no mechanical joints and use Hot Gas Extrusion Welding (i/a with SANS 10268-1) technique to join pipes on site. This method ensure leak free pipe systems suitable for dolomite areas. HDPE is also very **Flexible, Robust and Resistant** to most aggressive elements, thus adapts and withstand soil movement issues in dolomite areas.

SINVAC has extensive experience in pipelines designed and can assist with Manhole designs, custom fittings and installation of pipe systems. Our Manholes are manufactured using 100% HDPE material and welded by qualified HDPE welders. HDPE systems are also referred to as "joint-less" systems, thus guaranteeing no leaks, and perfectly suitable for dolomite areas.





## SINVACLITE™ HDPE Structured Wall Pipe

SINVAC manufactures SINVACLITE™ Pipe from