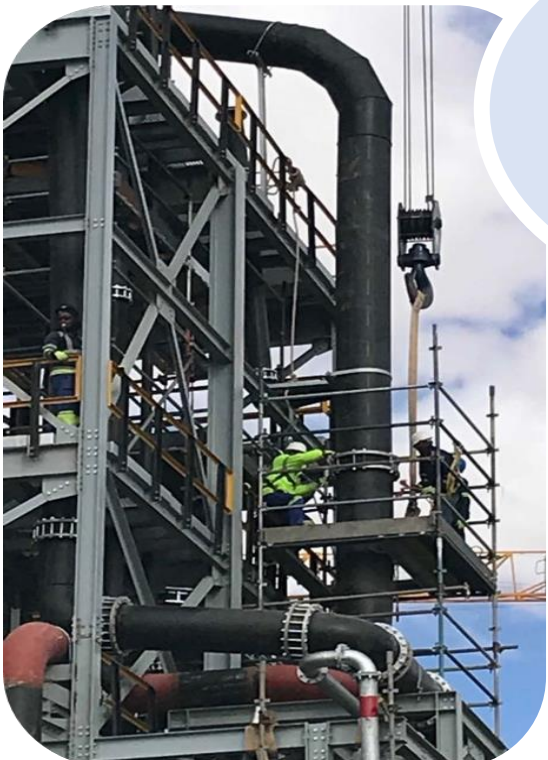


# Sinvac successfully Manufacture, Fabricate & Install HDPE Piping Systems for Zinc Concentrator

The project consisted of **17km of In-plant Piping** and approximately **17500 of Fittings** sizes 20mm to 800mm, **2.5km of HDPE Lined Carbon Steel Pipe**, over **1km of Flexible Hose**, **1116 Valves** and **5.6 Tons Steel Pipe Supports**.



10 Months  
**Zero Incidents**  
86 Team Members



- 17 km of HDPE Pipe**
- 17 500 HDPE Fittings**
- 2.5 km Lined C/S Pipe**
- 1 km Flexible Hose**
- 1116 Valves**
- 5.6T Steel Pipe Supports**

**CASE STUDY**

---

**Project**  
Zinc Concentrator

---

**Client**  
Gamsberg Mine

---

**Products**  
HDPE Pipe, HDPE lined Carbon Steel Pipe, Fittings, Valves & Steel Supports

The Sinvac Project Team consisted of SHE Representatives, QC Officers, a dedicated Project Planner, Material Controller, Team Leaders and Machine Operators totaling 86 team members reporting to Sinvac’s Project Manager. Sinvac was involved in the Construction, Commissioning, Completion and Handover stages. The Zinc Concentrator, situated in the Northern Cape, is one of the largest undeveloped zinc deposits in the world. Amidst harsh conditions and very tight deadlines, Sinvac managed to complete the entire scope of work completely incident free.



# Large DRC Copper Producer takes off with **Sinvac**



Sinvac Mining & Engineering, working with SENET, has successfully supplied one of the largest projects in Central Africa with its proven **HDPE Piping Systems**.

Total of  
340 trucks  
dispatched



Sinvac Mining & Engineering and Sinvac Piping was selected to supply all the HDPE Pipe & Fittings for a large Copper Project in the DRC. This project is located in the Katanga Province of the DRC. The plant design and layout was developed by SENET engineers and designers, and comprised the Civil, Structural, Mechanical, Electrical and Instrumentation aspects of the project.

**Working closely with SENET, Sinvac supplied 80 km of HDPE pipe and 2830 fabricated fittings**

**Daily inspections of all HDPE pipe and fabricated fittings by SENET to ensure conformance to the highest quality standards.**

Working closely with SENET, Sinvac supplied 80 km of HDPE pipe and 2830 fabricated fittings.

Daily inspections of all HDPE pipe and fittings by SENET were conducted for a period of 6 months in order to ensure conformance to the highest quality standards as prescribed by SENET.

## CASE STUDY

**Project**  
Copper Project DRC

**Client**  
Large DRC Copper Producer / SENET

**Products**  
HDPE Pipe & Fittings



**SINVAC**  
**PIPING**

163Lloyd Street, P O Box 19294, Pretoria Industrial, Pretoria West, 0117  
E: [info@sinvacpiping.co.za](mailto:info@sinvacpiping.co.za) or [info@sinvacmining.co.za](mailto:info@sinvacmining.co.za)  
W: [www.sinvacpiping.co.za](http://www.sinvacpiping.co.za) or [www.sinvacmining.co.za](http://www.sinvacmining.co.za)  
T : +27(0) 12 386 6484

# Sinvac effectively completes another HDPE In-Plant Piping Project



Sinvac Mining & Engineering has successfully **manufactured, supplied, fabricated and installed** over 4km of HDPE, CS, GCS, RRPVC Pipes and Associated Fittings.



**Sinvac manufacture, supply, fabricate and install**



Sinvac Mining & Engineering and Sinvac Piping was appointed by Basil Read Matomo Projects for the **manufacturing, supply, fabrication and installation** of over 4km of HDPE, CS, GCS, RRPVC Pipes and Associated Fittings for the Chrome Tailings Retreatment Plant in Rustenburg. The installation included Valves, Special In-line items as well as Steel Pipe Support fabrication and installation.



**CASE STUDY**  
.....  
**Project**  
Chrome Tailings Retreatment Plant  
.....  
**Client**  
Basil Read Matomo Projects  
.....  
**Products**  
Manufacture, supply and installation of pipe & Associated Fittings  
.....

**"Your Single Source HDPE Solution Company"**

Pressure testing was also done and commissioning assistance provided. The project delivery period was 12 weeks.



**SINVAC**  

---

**PIPING**

# Yet another **Overland HDPE Piping** project completed by the dedicated **Sinvac Project team**

Sinvac Mining & Engineering has successfully **manufactured, supplied, fabricated and installed** over 14km of Overland HDPE Pipes and Associated Fittings.



**SINVAC**  
**PIPING**



14 000 m  
Overland Pipe  
& Fittings

Sinvac Mining & Engineering and Sinvac Piping was appointed for the manufacturing, supply, fabrication and installation of 14km of overland HDPE Pipe and Associated Fittings. The installation also included Valves, Special In-line items and Casting of Plinths and Thrust Blocks. Pressure testing was done to ensure conformance to project requirements. The total project delivery period was 19 weeks.

**"Your Single Source HDPE Solution Company"**



**CASE STUDY**

.....

**Project**  
Overland Piping

.....

**Client**  
Basil Read Matomo Projects

.....

**Products**  
Manufacture, supply and installation of HDPE Pipe & Associated Fittings

.....

# Sinvac successfully completes yet another HDPE Installation Project for the Water Purification Industry

Sinvac provides a **Single Source Solution** for all HDPE needs from Manufacture through to Commissioning.



**SINCVAC**  
**PIPING**



Custom  
Fabrication  
of HDPE  
Manifold

Sinvac Mining & Engineering and Sinvac Piping was appointed for manufacturing, supply and installation of HDPE Pipe and Associated Fittings for a Water Purification Plant. The HDPE fittings all comprised of Moulded HDPE Fittings. The installation included the custom fabrication of HDPE manifolds.

Sinvac was also responsible for the installation of all In-line items and pipe supports.



## CASE STUDY

**Project**  
Water Purification Plant

**Client**  
Proxa Millsell WTP

**Products**  
Manufacture, supply and installation of HDPE Pipe & Associated Fittings

163 Lloyd Street, P O Box 19294, Pretoria Industrial, Pretoria West, 0117

E: [info@sinvacpiping.co.za](mailto:info@sinvacpiping.co.za) or [info@sinvacmining.co.za](mailto:info@sinvacmining.co.za)

W: [www.sinvacpiping.co.za](http://www.sinvacpiping.co.za) or [www.sinvacmining.co.za](http://www.sinvacmining.co.za)

T : +27(0) 12 386 6484